

Pitcher

Learning Targets

- I can make works of art using the wheel, pinch method, slab method, or coil method
- I can use the creative process to plan, sketch, and implement my design into clay
- My pitcher will have a unified style or theme
- I can cleanup my area and tools
- I can create a pulled handle
- I can create a beak spout
- I can use glaze to decorate my pitcher in an aesthetic manner

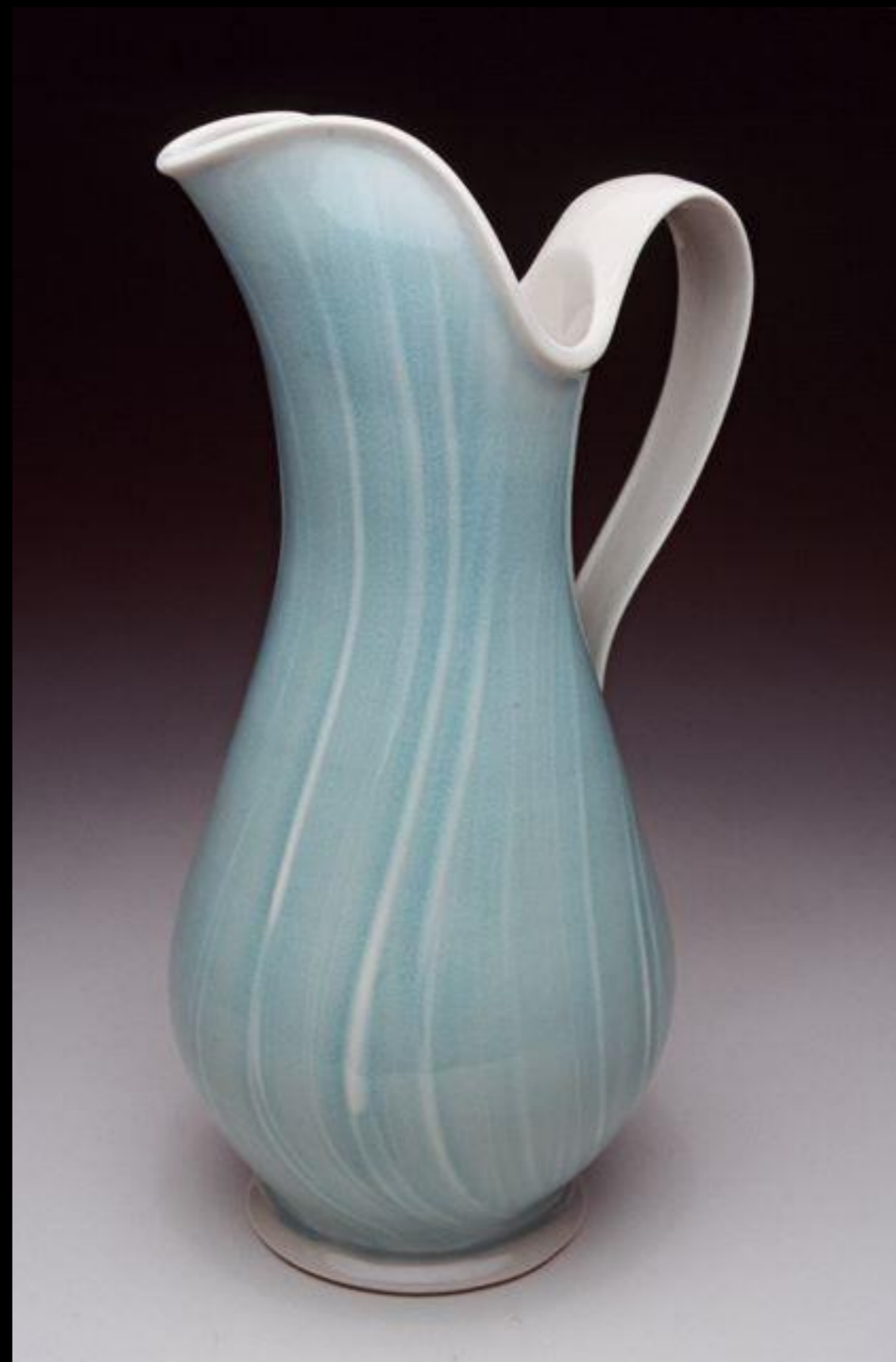
















Pulled Handle

Step 1

- Create a carrot shaped pulling bank



Step 2

- Using lots of water pull downward to create the pottery handle



Step 3

- Set the pulled handle on an edge to dry slightly
- Do not let them reach the leather-hard stage



Step 4

- Cut the pulled handle away from the pulling blank



Step 5

- Attach the handle using the slip and score technique
- Do not touch the outside of the handle
- Press the base of the handle into your vessel



Important Note

- Do not touch the outside of the handle
- Let it set to almost leather-hard before attaching it
- Your piece must be leather hard before you can attach a handle

Making a Spout

- <https://www.youtube.com/watch?v=IRFyao2wz5Y>
- <https://www.youtube.com/watch?NR=1&v=7uS9EKGJ9UU&feature=endscreen>
- <https://www.youtube.com/watch?v=FBWW7fXv8l8&feature=fvsr>

Requirements

1. Create a Vessel with a Spout and Handle
2. Can be made with pinch, coil, slab, or a combination of methods
3. The overall goal is to have unified style and theme
4. Must have a pulled handle

Essential Questions

1. Will my pitcher be functional or non-functional?
2. What is my pitcher's theme or story?
3. What type of form will my pitcher have?
4. What tools and techniques will I use?
5. What are the next steps in the process?
6. How does my handle relate to the form of my pitcher?
7. What method will I use to create my pitcher?